

AVVISO DI SEMINARIO

Mercoledì 14 dicembre ore 11,00

*nell'Aula Seminari del Dipartimento di
Scienze e Tecnologie Chimiche, il*

Prof. Alexandre M.J.J. Bonvin

*Computational Structural Biology Group,
Department of Chemistry, Faculty of Science, Utrecht University,
3584CH, Utrecht, The Netherlands.*

Terrà un seminario dal titolo:

**High-resolution, integrative modelling of
biomolecular complexes from fuzzy data.**

Proponente: Dott. Marco Sette

High-resolution, integrative modelling of biomolecular complexes from fuzzy data.

Alexandre M.J.J. Bonvin

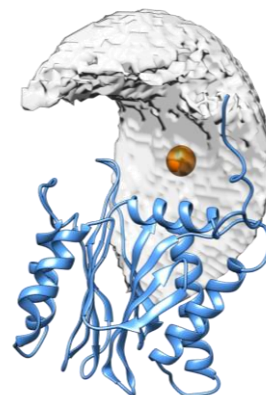
Computational Structural Biology Group, Department of Chemistry, Faculty of Science, Utrecht University, 3584CH, Utrecht, The Netherlands.

a.m.j.j.bonvin@uu.nl

The prediction of the quaternary structure of biomolecular macromolecules is of paramount importance for fundamental understanding of cellular processes and drug design. In the era of integrative structural biology, one way of increasing the accuracy of modelling methods used to predict the structure of biomolecular complexes is to include as much experimental or predictive information as possible in the process.

We have developed for this purpose a versatile information-driven docking approach HADDOCK (<http://www.bonvinlab.org/software/haddock2.2>) [1,2]. HADDOCK can integrate information derived from biochemical, biophysical or bioinformatics methods to enhance sampling, scoring, or both [3]. The information that can be integrated is quite diverse: interface restraints from NMR, mutagenesis experiments, or bioinformatics predictions; shape data from small-angle X-ray scattering [4] and, recently, cryo-electron microscopy experiments [5,6].

In my talk, I will illustrate HADDOCK's capabilities with various examples. I will also introduce the concept of explorative modelling in which the interaction space defined by a limited number of restraints is systematically mapped [7], which allows, for example, to identify false positive restraints from MS cross-link experiments. We have developed for this purpose the DisVis web server available from: <http://milou.science.uu.nl/services/DISVIS>



DISVIS visualization of the accessible interaction space consistent with at least 7 restraints

References

1. G.C.P. van Zundert, J.P.G.L.M. Rodrigues, M. Trellet, C. Schmitz, P.L. Kastiris, E. Karaca, A.S.J. Melquiond, M. van Dijk, S.J. de Vries and A.M.J.J. Bonvin. The HADDOCK2.2 webserver: User-friendly integrative modeling of biomolecular complexes. *J. Mol. Biol.*, **428**, 720-725 (2015).
2. S.J. de Vries, M. van Dijk and A.M.J.J. Bonvin. The HADDOCK web server for data-driven biomolecular docking. *Nature Protocols*, **5**, 883-897 (2010).
3. J.P.G.L.M. Rodrigues and A.M.J.J. Bonvin. Integrative computational modeling of protein interactions. *FEBS J.*, **281**, 1988-2003 (2014).
4. E. Karaca and A.M.J.J. Bonvin. On the usefulness of Ion Mobility Mass Spectrometry and SAXS data in scoring docking decoys. *Acta Cryst. D.*, **D69**, 683-694 (2013).
5. G.C.P. van Zundert, A.S.J. Melquiond and A.M.J.J. Bonvin. Integrative modeling of biomolecular complexes: HADDOCKing with Cryo-EM data. *Structure*. **23**, 949-960 (2015).
6. G.C.P. van Zundert and A.M.J.J. Bonvin. Defining the limits and reliability of rigid-body fitting in cryo-EM maps using multi-scale image pyramids. *J. Struct. Biol.*, **195**, 252-258 (2016).
7. G.C.P. van Zundert and A.M.J.J. Bonvin. DisVis: Quantifying and visualizing accessible interaction space of distance-restrained biomolecular complexes. *Bioinformatics*. **31**, 3222-3224 (2015).